



BRANCH LOCATIONS

NORTHWEST | CORPORATE

7032 South 196th St.
 Kent, WA 98032
 Ph: (253) 872-0141
 Fx: (253) 872-8710
 (800) 248-8498
 stevec@americanpiledriving.com
 kellyg@americanpiledriving.com
 chrisw@americanpiledriving.com

WEST COAST

2985 Loomis Rd.
 Stockton, CA 95205
 Ph: (209) 942-2166
 Fx: (209) 942-2455
 (888) 245-4401
 chrisc@americanpiledriving.com

GULF REGION

3975 FM Hwy 1485
 Conroe, TX 77306
 39266 Doyle Dr., Ste. A
 Gonzales, LA 70737
 Ph: (936) 271-1044
 Fx: (936) 271-1046
 (800) 596-2877
 joew@americanpiledriving.com

NORTHEAST

401 Hartle St.
 Sayreville, NJ 08872
 Ph: (732) 432-6604
 Fx: (732) 432-6608
 (888) 217-7524
 billz@americanpiledriving.com
 paulk@americanpiledriving.com

MID-WEST

50 Gerber Industrial Dr.
 St. Peters, MO 63376
 Ph: (636) 397-8400
 Fx: (636) 278-4278
 (877) 296-8044
 Loganh@americanpiledriving.com

MID-ATLANTIC

500 Newtown Rd., #200
 Virginia Beach, VA 23462
 Ph: (757) 518-9740
 Fx: (757) 518-9741
 (866) 399-7500
 jimmyd@americanpiledriving.com

SOUTHEAST

1345 Industrial Park Rd.
 Mulberry, FL 33860
 Ph: (863) 324-0378
 Fx: (863) 318-9409
 (800) 570-3844
 jimb@americanpiledriving.com
 jimc@americanpiledriving.com
 wallyb@americanpiledriving.com

CANADA

1002 7th Street
 Nisku, Alberta T9E 7P2
 Ph: (780) 474-9888
 (855) 328-9888
 ericl@americanpiledriving.com

MEXICO & CENTRAL

Avenida Periferico Sur 7800
 Sta. Ma Tequetexpan
 Tlaquepaque, Guadalajara Jalisco
 Mexico CP. 45601
 Ph: (253) 368-3911
 Fx: (253) 872-8710
 +1 (877) 457-5022
 davidm@americanpiledriving.com

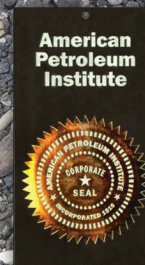
PILING PRODUCTS

24430 FM 1488, Ste. A
 Magnolia, TX 73355
 Ph: (936) 372-9760
 mattf@apedrilling.com



APE HD™ PILING

DEEP FOUNDATION SOLUTIONS



The APE product line is protected by, but not limited to the following patent numbers:
 5088565A, 5117925A, 5263544A, 5529132A, 5544979A, 5609380A, 5653556A,
 5794716A, 6039508A, 6386295B1, 6427402B1, 6431795B2, 6447036B1, 6543966B2,
 6648556B1, 6672805B1, 6732483B1, 6736218B1, 6896448B1, 6908262B1, 6942430B1,
 6988564B2, 7168890B1, 7392855B1, 7694747B1, 7708499B1, 7824132B1, 7854871B1,
 7913771B2, 7950876B2, 7950877B2, 8070391B2, 8181713B2, 8186452B1, 8434969B2,
 8496072B2, 2009020005A1. For a more detailed information and a more comprehensive
 list of APE patents please visit the website at www.apevibro.com/ver2/APEpatents.asp.

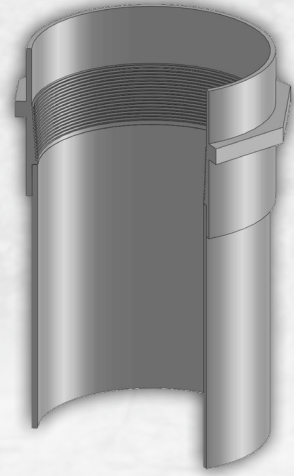
800-248-8498

WWW.AMERICANPILEDIVING.COM



800-248-8498

WWW.AMERICANPILEDIVING.COM



THREADED COUPLER WITH SOCKET DRIVE TECHNOLOGY

- COUPLERS WITH THE **APE** PATENTED THREAD CONNECTION ELIMINATES MAKE UP PAST THE MIDPOINT
- **ADD UNLIMITED** ADDITIONAL PILE SECTIONS
- **ALL CUT OFF COUPLERS ARE PROPERTY OF APE**

SHAFT SECTION

- **DOM SEAMLESS API CASING**
- **SHAFT SECTIONS FROM 4 TO 40 FOOT LENGTHS**

GEO-EXCHANGE TECHNOLOGY

- **APE HD™ HELICAL PILE MATERIAL CAN BE USED WITH APE PATENT PENDING CLSCW TECHNOLOGY TO HEAT AND COOL STRUCTURES USING THE STEEL PILE FOUNDATION AND A GROUND SOURCE HEAT PUMP**

THREADED ENDS

- **ADD UNLIMITED** ADDITIONAL PILE SECTIONS

HELICAL PLATES

- **1 HELIX FOR EACH PILE, OR MULTIPLE 10" TO 36" O.D. CLOCKWISE HELICAL PLATES**
- **1/2" TO 2.0" THICK**
- **PITCH 4" TO 12"**
- **TENSILE STRENGTHS FROM 50,000 PSI TO 100,000 PSI**

PILE TIPS

- **VARIOUS OPEN ENDS**
- **VARIOUS CLOSED END DIGGING TIPS**
- **GEO-EXCHANGE DOUBLE-PLATED CLOSED-END**
- **TIPS FOR GROUT INJECTION**

SHAFT SECTION SPECIFICATIONS							
API in lbs / ft	Units	API 13.5	API 23	API 29	API 53	API 60	API 68
Diameter	in	4.5	5.5	7	9.625	11.75	13.375
	mm	114.30	139.70	177.80	244.48	298.45	339.73
Thickness	in	0.290	0.415	0.403	0.472	0.489	0.514
	mm	7.37	10.54	10.24	11.99	12.42	13.06
Inside Diameter	in	3.92	4.67	6.184	8.681	10.772	12.347
	mm	99.57	118.62	157.07	220.5	273.61	313.61
Area (A)	in ²	3.83	6.63	8.45	13.57	17.30	20.77
	mm ²	2,471	4,277	5,451	8,756	11,161	13,400
Section Modulus (Z)	in ³	3.79	7.84	13.16	33.40	46.76	60.51
	mm ³ / 10 ³	62.18	128.50	215.70	547.50	766.30	991.80
Moment of Inertia (I)	in ⁴	8.54	21.57	46.07	160.80	274.70	404.70
	mm ⁴ / 10 ⁶	3.55	8.98	19.18	66.93	114.40	168.50

Yield API L-80 to API P-110 (80,000 to 110,000 psi) - API ISO Certified Manufacturer



Note: All technical specifications are subject to change without notice. Consult the factory for details on any specific product (800) 248-8498.